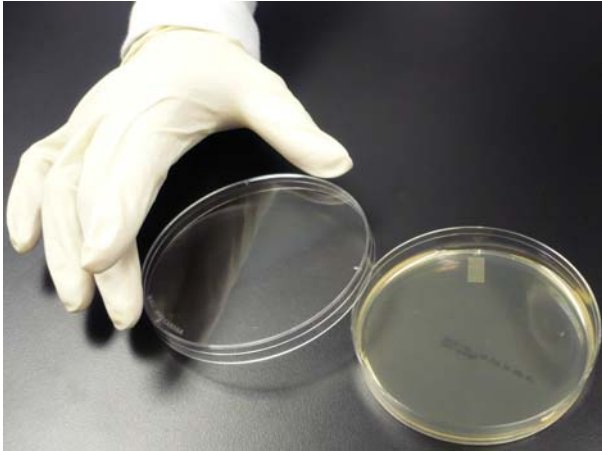


Air Sampling For Mould Using Settle Plates

AIHA EMPAT Laboratory ID #178744

1. Wear the provided gloves.
2. Label the base (the part containing the media) of the 2 plates provided with location and date the sample is being taken. Note: one plate is marked DG18 and the other MEA at the bottom.
3. Transfer the plates into the area/room where you want to test the air
4. Place plates at table height if possible or another appropriate position
5. Remove the parafilm seal and raise lids to expose the surface of the medium, rest the lid on the very edge of the plate so that the entire agar surface is completely exposed (see figure 1 on page 2). Take care not to put fingers on plates.
6. Leave plates exposed for half an hour to 4 hours (**4 hours recommended where there is no visible mould growth**). The exposure time should be recorded before sending the plates to the laboratory
7. After exposure, replace lids of plates. Seal plates with the parafilm provided by stretching it out around the lid and base of the plate (see figure 2, page 2).
8. Pack the plates safely to avoid breakage and send them back to the lab with the following information:
 - a. date and time of day sample(s) were taken
 - b. area/location of sample
 - c. sample number (if taking samples from several rooms)
 - d. your contact information (address, phone, fax and email)



Raise lids to expose the surface of the medium



Leave plates exposed for the amount of time that you decided



Peel the parafilm for sealing plates



Seal plates by stretching the parafilm around the plate